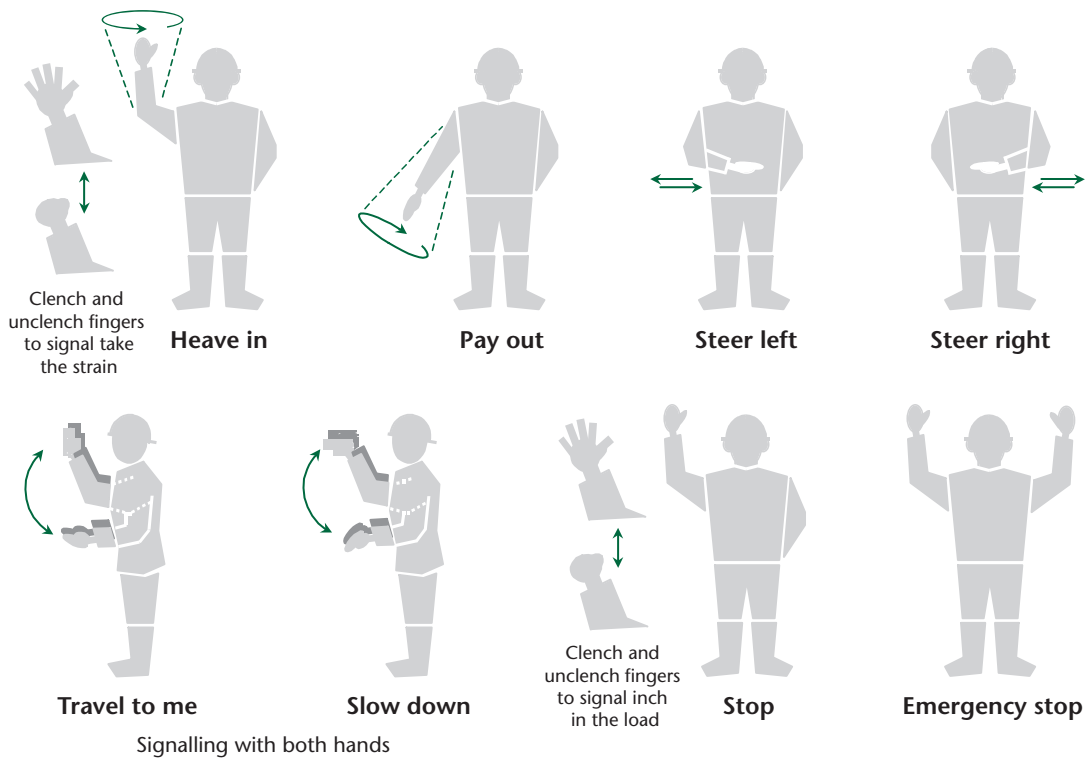


## Communications

During winching more than one operator may be involved. It is essential that a system of communication is established between operators to allow contact while winching is

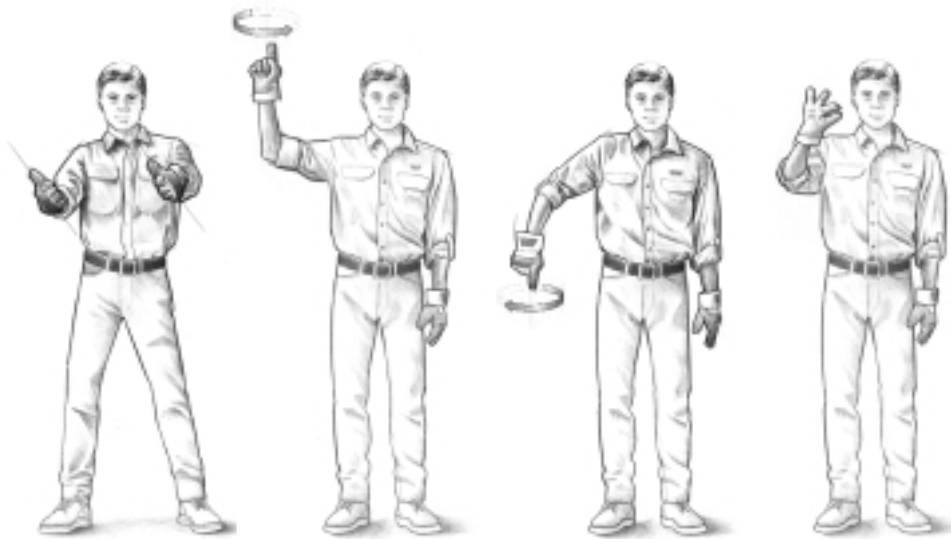
carried out. In some circumstances radios will be used for communication. Alternatively a system of hand signals exists which has been adopted for winching operations. Hand signals for general winching communication are shown in Figure 3.4

**Figure 3.4** Hand signals for general winch operator communication. (Reproduced from Forestry Commission, Forestry Training Service Debogging Course Notes.)



## Winching hand signals

In some situations, recovery could involve two people. One driving and controlling the winch, while the other provides navigation instructions and ensures the wire rope is winding properly. You and your helper must establish clear and precise hand signals and review so everyone clearly understands. It should also be understood that if the driver controlling the winch cannot see both hands of the assistant, the winch should not be activated. Suggested signals:



**1) Direction of steering**  
Hold your arms out with thumbs up and tilt your hands in the direction you advise the driver to steer.

**2) Power in the wire rope**  
Hold your forefinger in the air above your shoulder height and draw small circles in the air to indicate to wind the winch.

**3) Power out the wire rope**  
Hold your forefinger pointing down and draw circles in the air at about waist height to indicate feeding more wire from the winch.

**4) Pulse wind the wire rope**  
Tells the driver to wind the winch in short, quick bursts. Open and close the two fingertips until you want the winch to stop.



**5) Stop the winch**  
Clinch fist, palm to driver, held high enough for driver to see and other arm straight out at shoulder height is the sign to stop the winch.

**6) Braking**  
Cross your palms together to tell the driver to apply the foot brake.

**7) Drive assist**  
Tells driver to give the tires more drive force to assist the winching process.